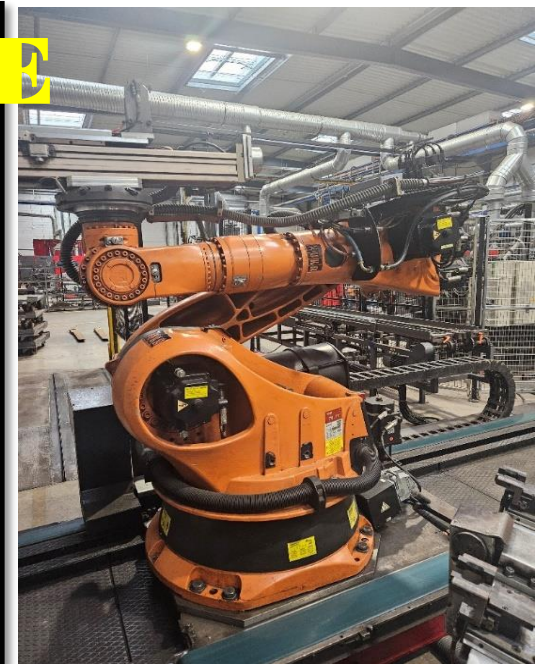


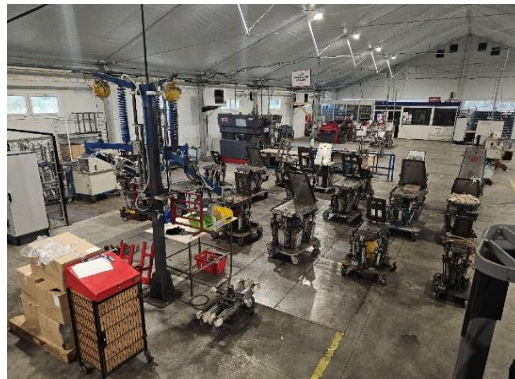


MACHINES à VENDRE

caddie®

ATELIER : FERRAGE

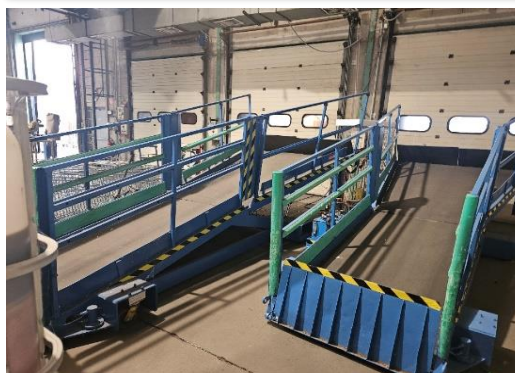




MACHINES à VENDRE

caddie®

ATELIER : MONTAGE - EXPEDITION





MACHINES à VENDRE

caddie®

DIVERS AUTRES ATELIERS





MACHINES à VENDRE


caddie®

MOYEN DE MANUTENTION & TRANSPORT

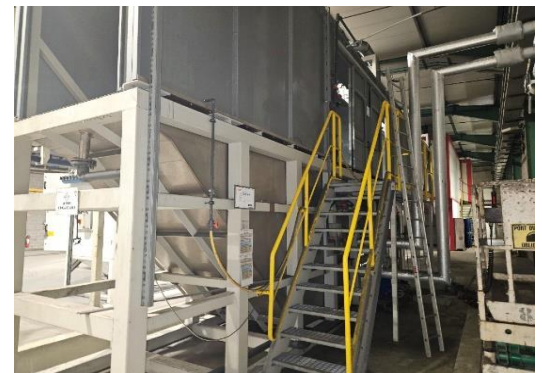
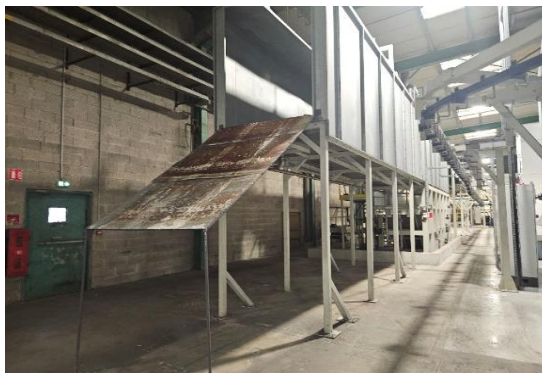
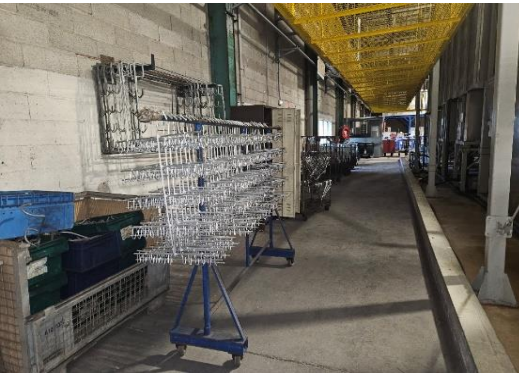
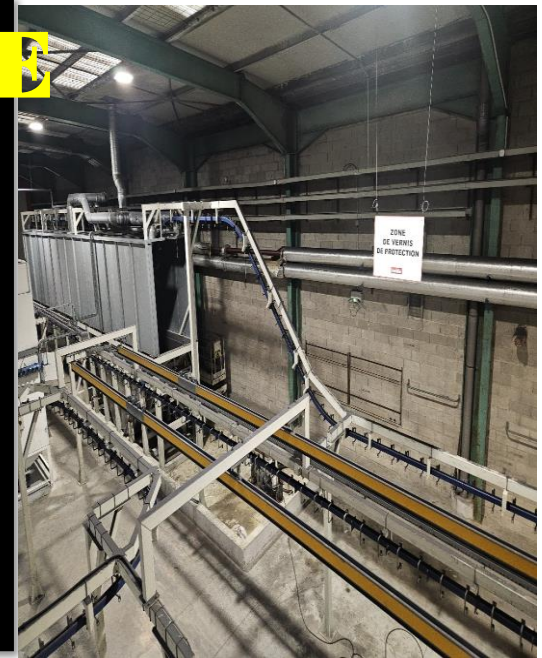




MACHINES à VENDRE




LIGNE DE ZINC & VERNIS

The central image features a large red rectangular logo with the word "caddie" in white lowercase letters and a registered trademark symbol (®). The logo is superimposed over a background of industrial machinery. Above the logo, the text "MACHINES à VENDRE" is written in yellow, and below it, "LIGNE DE ZINC & VERNIS" is also written in yellow.



MACHINES à VENDRE



STATION DE TRAITEMENT

The central graphic features the text 'MACHINES à VENDRE' at the top and 'STATION DE TRAITEMENT' at the bottom, both in yellow. In the center is a red rounded rectangle containing the word 'caddie' in white lowercase letters with a registered trademark symbol (®). The background of this graphic is a black and white photograph of a large industrial facility with many rows of metal grates or racks.